

ArtWorks

ARTIST NEWSLETTER

132 White Mountain Highway (Rte 16)
Mailing Address: PO Box 155
Chocorua, NH 03817
603-323-8041
www.chocoruaArtworks.com
artworks4us2@gmail.com

Friday Painters

Friday Painters, the winter version of the Plein Air group, gathers this time of year to explore alternate techniques, mediums and styles of painting and drawing.

The Gibson Center in North Conway Village accommodates the group

from noon to 3 pm Fridays every day schools are in session. There is plenty of parking and a hot lunch by donation if you arrive by 11:30.

All artists working at every ability level are welcome. Please bring your own supplies (no oils). There is no charge. A wealth of information is shared by artists of all abilities who attend on Fridays.

For additional information, contact Sue at suefortier@msn.com or JP at jpgoodwin@roadrunner.com.

Inside this issue:

Below Stairs at the
Museum of Fine Arts
in Boston 2

In Their Own Words 3-4

Some Highlights
of the Year 5-6

Hours

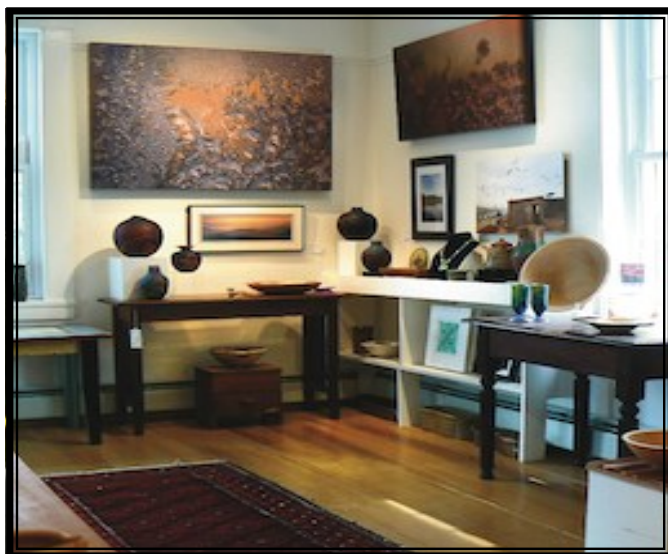
January & February
Sat & Sun 10-5
March CLOSED
April through June
Sat & Sun 10-5

Coming Soon

New Spring Exhibit
Summer Art Show
Wine Tasting
Workshops

Supporting Membership

ArtWorks is now offering a Supporting Membership to the public. This membership entitles you to a 10% discount on purchases at the ArtWorks Gallery, plus a 10% discount on classes and workshops. Inquire at the Gallery.
www.chocoruaArtworks.com





ArtWorks is looking for new members!!!

We are dedicated to the enhancement and education of our community through the arts. Our mission is to provide space and opportunities to local artists so they can share their knowledge, show their work and inspire others. Application information is available on our website. www.chocoruaArtworks.com

*Some painters transform the sun into a yellow spot,
others transform a yellow spot into the sun.*

Pablo Picasso

Below Stairs at The Museum of Fine Arts in Boston by Ann Lambert

December 16 – Boston, MA-Museum of Fine Arts

We were met at the staff entrance by our guide for the day Christie Pohl. Christie is a native of Sandwich, NH, and has extensive experience in conservation of Nile artifacts. She now works for the MFA as a conservator.

Christie arranged passes for us and led us through places not seen by the public. As we walked through room after room of storage, she explained that most of what is seen in the public exhibit rooms is but a fraction of what is stored. Approximately 400,000 items are catalogued by the MFA and only 2% are on exhibit at any time. Many pieces have never been exhibited.

Floor to ceiling metal cabinets with rows and rows of drawers filled each room. Some drawers were mere inches deep—holding tiny statues and bins of beads. Others held large chunks of what looked like stone or wood, all numbered and catalogued with most waiting to be cleaned or repaired.

There were shelves holding huge stone sarcophagi the size of a small car. There also are several offsite storage facilities. We did not see these. While we only saw the Egyptian storage area, it blew my mind to think that each department (paintings, textiles, glass, and all the other categories) has similar spaces. 400,000 items!

Repairs were done on many items hundreds of years ago. Sometimes these repairs did not last so that a piece now needs more modern help. There are times when a repaired pot will be taken apart completely and re-glued with modern adhesives. (So many detailed photos are taken at every step.) Hide glue was a popular material used in the past, but it becomes brittle and changes color. There are new compounds that are used now depending on the type and material of the piece. Sometimes soaking the whole piece in water is possible, but not always; paints could fade or flake. Cleaning is done painstakingly with gentle



Christie at work at the MFA

solvents, brushes and q tips. The plan of conservation now is to repair any breaks and to stabilize for the future.

Also, there is a whole department which creates the mounts for the artworks. These are painted and formed to blend in with the piece and are virtually unseen.

Being able to tour “below stairs” at the MFA was an amazing opportunity.

In Their Own Words

from *Process and Light* Artists

Peg Scully, Nancy Marsden, & John Watkins

Peg Scully received her B.A. from Montclair State University and her M. Ed. from the University of Cincinnati. She had a 30 year career both as a teacher in the regular classroom, as a teacher of the deaf and hard-of-hearing, and as a classroom sign language interpreter.

As a student at the Ridgewood, N.J. Association (now Ridgewood Art Institute), Peg learned the fundamentals of oil painting taught by Arthur Maynard whose painterly approach to realism and interest in the effects of light on landscape and figure, continues to influence her work. When Peg moved permanently to New England, she began to attend painting workshops, where Tony Van Hasselt and Judi Wagner exposed her to the joys and challenges of plein air painting in watercolor. She was also able to travel and paint; Ann Fisk's Traveling Paintbrush excursions to Europe remain some of her happiest memories.

Peg taught workshops and classes in the Mount Washington Valley area and had a gallery in her Freedom home for 20 years. A painting group was formed in the 90's and local friends and painters including Willey Fromm, Marge Kendrick, Paula Kuehn, Wes Warren, and later Terri Brooks, Pat Goodwin and Nancy Marsden among others, met weekly to paint and critique each other's work. This way, the artists were motivated to produce landscapes and still-lives as well as figure paintings and portraits of friends, relatives and neighbors who consented to pose for them (they received a model's fee!).

A Signature Member of the New England Watercolor Society since 2008, Peg is also a member of the Mount Washington Valley Arts Association. She shows her work at the Freedom Gallery, the Freedom Village Store, and at ArtWorks Gallery in Chocorua, NH.



Peg Scully—Gifted Artist & Teacher by Andrea Kennett

Growing up in the Mt. Washington Valley, I heard about Peg Scully long before I actually met her. She was always mentioned in tandem with the other gifted artists in the area—David Baker, Nan White, Marge Kendrick, Barbara Fromm, Phyllis French, Robert Gordon, Ernie Brown. I'm sure I've missed a few; the list goes on as the "Who's Who" in the arts community.



Over the years, I have had occasion to paint with some of these folks and take lessons...a very sobering experience, let me tell you!!! Anyone that can paint a full-size sheet with watercolor has my undying admiration. Peg is one of them.

As part of the ArtWorks community of artists, I have had ample opportunity to study other artists' works and try to learn from them. Whenever possible, I take a class to further my own artistic talents. Not every artist can teach; it's another talent unto itself. Peg can do both—paint and teach. She has helped me through tough spots as a fellow artist and a dear friend, not to overlook her sense of humor and spontaneous enthusiasm. It shows in her work.

The *Process and Light* show at ArtWorks Gallery's new North Wing is just a sample of her work. The numbers of paintings that are owned and cherished in private collections over a 60-year career is considerable. Also, she has just created a fabulous book, *Painting Freedom*, a memoir of her personal history, how she came to live in Freedom and many examples of her painting, past and present. It's a page turner and is available at the ArtWorks Gallery.

In Their Own Words (cont.)

from *Process and Light* Artists—Peg Scully, Nancy Marsden, & John Watkins

Nancy Marsden. Born in Boston, MA, Nancy Wyeth Norris attended Belmont High School followed by Lake Erie College in Painesville, Ohio. After graduation, she married Stanley Marsden. They lived in Ohio until moving to Tamworth, NH, in 1978.

Nancy studied drawing with accomplished artist Cindi Swanson. Her pen and ink drawings were used by the Tamworth Arts Association for the cover of their silver anniversary calendar of events. The Tamworth Community Nurses calendar also featured one of her drawings.

Study with artist Ernie Brown began experimentation of detailed still lifes. Nationally known artists Judi Wagner and Tony Van Hasselt introduced her to loose flowing watercolors in which she worked for several years.

Nancy is now finding that she enjoys painting in oils. Plein air landscapes where light becomes such an important factor in creating her work is now her favorite form of artistic expression. "With so much natural beauty surrounding me, there is always another view waiting for my interpretation."

Her work has been exhibited in the Mount Washington Valley Arts Association's exhibits, the annual shows given by ArtWorks and the Arts Council of Tamworth, and a variety of local libraries. Presently, her work may be seen at ArtWorks Gallery in Chocorua, NH.



John Watkins. Retired Physician in Pediatric Gastroenterology and Nutrition.

The morning light changes with each season and each tide. I have visited an island in Maine and the mountains of New Hampshire nearly every year since childhood and my visits bring a sense of place and renewal. Each day begins with a morning walk, visiting and photographing old favorites as well as newly discovered spots in different seasons.



I have tried to capture the timeless nature of the island and the continuing struggles where the land meets the sea. Many of the structures remaining today are as they were 150 years ago. In my explorations, I am reminded that we are continually building on the past. The granite from the quarries of the 19th century became the foundations for the cities and buildings of the 20th century. Even now, the shore is littered with the detritus of those struggles from before.

The forests and mountain trails have similarly evolved with new trail management techniques and patch cutting, selective lumbering practices to stimulate biodiversity and long-term forest preservation.

My initial images were in color as I learned the language and the process. In recent years I have been drawn to the platinum/palladium printing process. The long tonal range of the print extends the "octave" of the photographic process. This extended range seems well suited to the light of both the mountains and the

sea. The required contact printing process utilizes a larger negative and a view camera. I have settled on a 7 x 17 banquet view camera, circa 1917-1920. I find that to visualize and compose an image on the ground glass is a contemplative and thoughtful process. My selections also include color gum trichromate images, representative of the first color photographic process and a carbon emulsion transfer print widely used before the introduction of silver chloride/bromide photographic papers.

It is my intention to elucidate the character and substance of the mountains, the islands and their people. The photographs taken and selected by their very nature reflect the changes which have occurred both on the mountains and the island and in the photographer, as well.

Some Highlights of the Year

In June, ArtWorks opened our new exhibit *Artists in Bloom* and hosted the **Greater Ossipee Area Chamber of Commerce (GOACC) EXPO**.

Three **workshops** were offered: JP Goodwin held two three-day workshops: *Everyone Can Draw* in July at ArtWorks and *Watercolor Plein Air* in October at various locations around Chocorua and Tamworth.



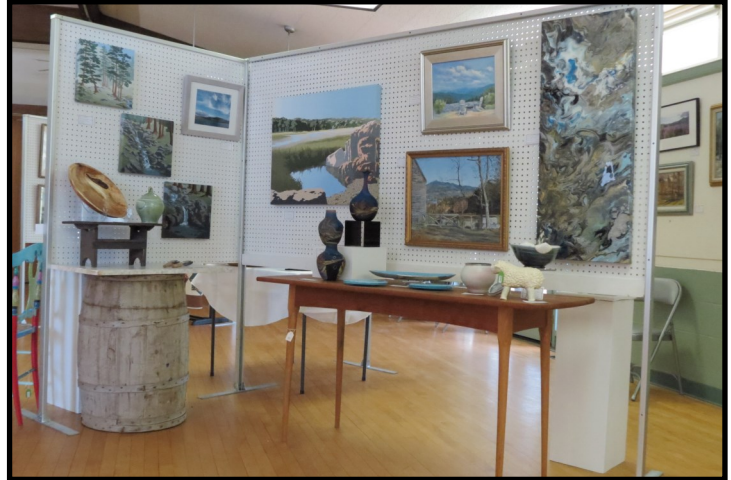
Ed Wintner presented a one-day workshop *Painting Trees (deciduous and conifers)* at Runnells Hall in Chocorua.

Several major physical **renovations** were made to the gallery this past year—with special thanks to Larry & Jersey Nickerson, Malinda Forcier and her husband Brian, and JP Goodwin and her painting crew.

The North Room, which had been part of the antiques barn, was winterized, rewired, and painted—giving ArtWorks wonderful additional space for exhibits, talks, and workshops.

The bathroom was refloored, rewired, updated, and painted. Lights were added to the outdoor sign.

Thanks to desk and display pieces donated by Nancy Cassidy, the sales desk area was expanded and made much more functional.



The annual Chocorua Summer Art Show was held at Runnells Hall the last weekend of July.



North Room Renovations



Some Highlights of the Year (cont.)

Process and Light, an exhibit honoring three members of ArtWorks (**Peg Scully, Nancy Marsden, and John Watkins**) was held in the renovated North Room and kitchen hallway November-February.



Peg Scully
Painter



Nancy Marsden
Painter



John Watkins
Photographer with View Camera

Each of the three artists had a **Sunday Spotlight** in which they gave a talk or were available to meet the public. Peg Scully also signed her book, *Painting Freedom*.

In November, December, and Valentine's Day, the gallery was open **Friday evenings** with refreshments and relaxed conversations.



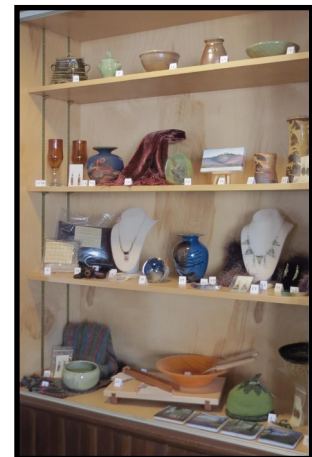
JP Goodwin at jewelry counter



Process and Light exhibit



Marty Koons and friend



ArtWorks display in case at Cook Memorial Library in Tamworth

In addition to being displayed at the ArtWorks gallery, members' artwork has been available for sale at several locations in Tamworth, including **The Other Store** and **The Preserve** (for a holiday evening event).

Until the end of March, members' artwork can be seen at **Cook Memorial Library** in Tamworth and is available for sale through ArtWorks. Be sure to check out the case in the front room of the library, in addition to the artwork hanging on the walls.

MANY, MANY THANKS

to our **member artists** and **board members** who volunteer their time, our **supporting members**, and our **customers**. Your work and support are invaluable and essential to keeping our doors open and to bringing our beautiful art to our community. **Special thanks to Andrea Kennett** for her enthusiasm and hours of service as our former Director. Please send news and photos for future editions of the newsletter to Ann Lambert at mumandiglass@aol.com.